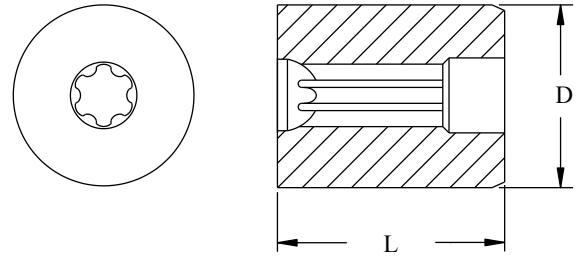


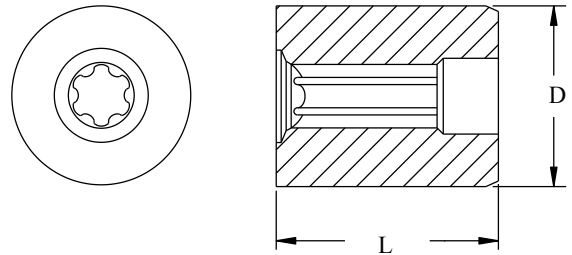
Stem Die Insert

Part Number	Drive Size	A inch/mm	B inch/mm	Diameter	Length
1PLE-530	1EP	.090/2.29	.069/1.75	Specify	Specify
1PLE-531	1EP	.090/2.29	.069/1.75	Specify	Specify
1PLE-532	1EP	.090/2.29	.069/1.75	Specify	Specify
1PLE-533	1EP	.090/2.29	.069/1.75	Specify	Specify
2PLE-530	2EP	.118/3.00	.091/2.31	Specify	Specify
2PLE-531	2EP	.118/3.00	.091/2.31	Specify	Specify
2PLE-532	2EP	.118/3.00	.091/2.31	Specify	Specify
4PLE-530	4EP	.146/3.71	.112/2.84	Specify	Specify
4PLE-530	4EP	.146/3.71	.112/2.84	Specify	Specify
5PLE-530	5EP	.181/4.60	.139/3.53	Specify	Specify
5PLE-531	5EP	.181/4.60	.139/3.53	Specify	Specify
7PLE-530	7EP	.237/6.02	.182/4.62	Specify	Specify
7PLE-531	7EP	.237/6.02	.182/4.62	Specify	Specify
8PLE-530	8EP	.288/7.32	.221/5.61	Specify	Specify
8PLE-531	8EP	.288/7.32	.221/5.61	Specify	Specify
8PLE-532	8EP	.288/7.32	.221/5.61	Specify	Specify
10PLE-530	10EP	.363/9.22	.279/7.09	Specify	Specify
11PLE-530	11EP	.388/9.86	.297/7.54	Specify	Specify
12PLE-530	12EP	.431/10.95	.330/8.38	Specify	Specify
12PLE-530	12EP	.431/10.95	.330/8.38	Specify	Specify
12PLE-531	12EP	.431/10.95	.330/8.38	Specify	Specify
14PLE-530	14EP	.499/12.67	.382/9.70	Specify	Specify
14PLE-531	14EP	.499/12.67	.382/9.70	Specify	Specify
16PLE-530	16EP	.571/14.50	.437/11.10	Specify	Specify
18PLE-530	18EP	.645/16.38	.494/12.55	Specify	Specify
20PLE-530	20EP	.715/18.16	.547/13.89	Specify	Specify
20PLE-531	20EP	.715/18.16	.547/13.89	Specify	Specify
22PLE-530	22EP	.787/19.99	.602/15.29	Specify	Specify
24PLE-530	24EP	.860/21.84	.658/16.71	Specify	Specify



Flange Die Insert

Part Number	Drive Size	A inch/mm	B inch/mm	Diameter inch/mm	Length inch/mm
4PLE-400	4EP	.146/3.71	.112/2.84	.500/12.70	.500/12.70
5PLE-400	5EP	.181/4.60	.139/3.53	.625/15.88	.500/12.70
6PLE-400	6EP	.218/5.54	.166/4.22	.625/15.88	.500/12.70
7PLE-400	7EP	.237/6.02	.182/4.62	.750/19.05	.750/19.05
8PLE-400	8EP	.288/7.32	.221/5.61	.750/19.05	.750/19.05
10PLE-400	10EP	.363/9.22	.279/7.09	1.000/25.40	1.00/25.40
11PLE-400	11EP	.388/9.86	.297/7.54	1.000/25.40	1.00/25.40
12PLE-400	12EP	.431/10.95	.330/8.38	1.250/31.75	1.00/25.40
14PLE-400	14EP	.499/12.67	.382/9.70	1.250/31.75	1.00/25.40
16PLE-400	16EP	.571/14.50	.437/11.10	1.250/31.75	1.00/25.40
18PLE-400	18EP	.645/16.38	.494/12.55	1.250/31.75	1.00/25.40
20PLE-400	20EP	.715/18.16	.547/13.89	1.500/38.10	1.00/25.40



1. Material: Carbide 25%
2. Special carbide grades available upon request.